

**Anti-CD337 Antibody**  
**Rabbit polyclonal antibody to CD337**  
**Catalog # AP61340****Specification**

---

**Anti-CD337 Antibody - Product Information**

Application	WB
Primary Accession	<a href="#">O14931</a>
Reactivity	Human, Mouse
Host	Rabbit
Clonality	Polyclonal
Calculated MW	21593

**Anti-CD337 Antibody - Additional Information****Gene ID** 259197**Other Names**

1C7; LY117; Natural cytotoxicity triggering receptor 3; Activating natural killer receptor p30; Natural killer cell p30-related protein; NK-p30; NKp30; CD337

**Target/Specificity**

Recognizes endogenous levels of CD337 protein.

**Dilution**

WB~~WB (1/500 - 1/1000)

**Format**

Liquid in 0.42% Potassium phosphate, 0.87% Sodium chloride, pH 7.3, 30% glycerol, and 0.09% (W/V) sodium azide.

**Storage**

Store at -20 °C. Stable for 12 months from date of receipt

**Anti-CD337 Antibody - Protein Information****Name** NCR3 ([HGNC:19077](#))**Synonyms** 1C7, LY117**Function**

Cell membrane receptor of natural killer/NK cells that is activated by binding of extracellular ligands including BAG6 and NCR3LG1. Stimulates NK cells cytotoxicity toward neighboring cells producing these ligands. It controls, for instance, NK cells cytotoxicity against tumor cells. Engagement of NCR3 by BAG6 also promotes myeloid dendritic cells (DC) maturation, both through killing DCs that did not acquire a mature phenotype, and inducing the release by NK cells of TNFA and IFNG which promote DC maturation.

**Cellular Location**

Cell membrane; Single-pass type I membrane protein

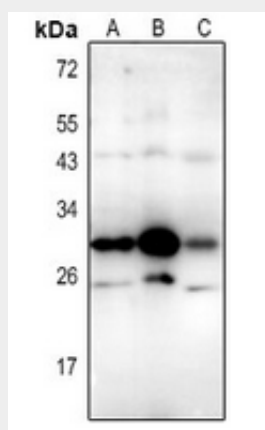
**Tissue Location**

Selectively expressed by all resting and activated NK cells and weakly expressed in spleen.  
{ECO:0000269|PubMed:10562324, ECO:0000269|Ref.2}

**Anti-CD337 Antibody - Protocols**

Provided below are standard protocols that you may find useful for product applications.

- [Western Blot](#)
- [Blocking Peptides](#)
- [Dot Blot](#)
- [Immunohistochemistry](#)
- [Immunofluorescence](#)
- [Immunoprecipitation](#)
- [Flow Cytometry](#)
- [Cell Culture](#)

**Anti-CD337 Antibody - Images**

Western blot analysis of CD337 expression in Myla2059 (A), K562 (B), mouse spleen (C) whole cell lysates.

**Anti-CD337 Antibody - Background**

KLH-conjugated synthetic peptide encompassing a sequence within the center region of human CD337. The exact sequence is proprietary.